

Figure 1 – Mod. Milano - Update 11/06

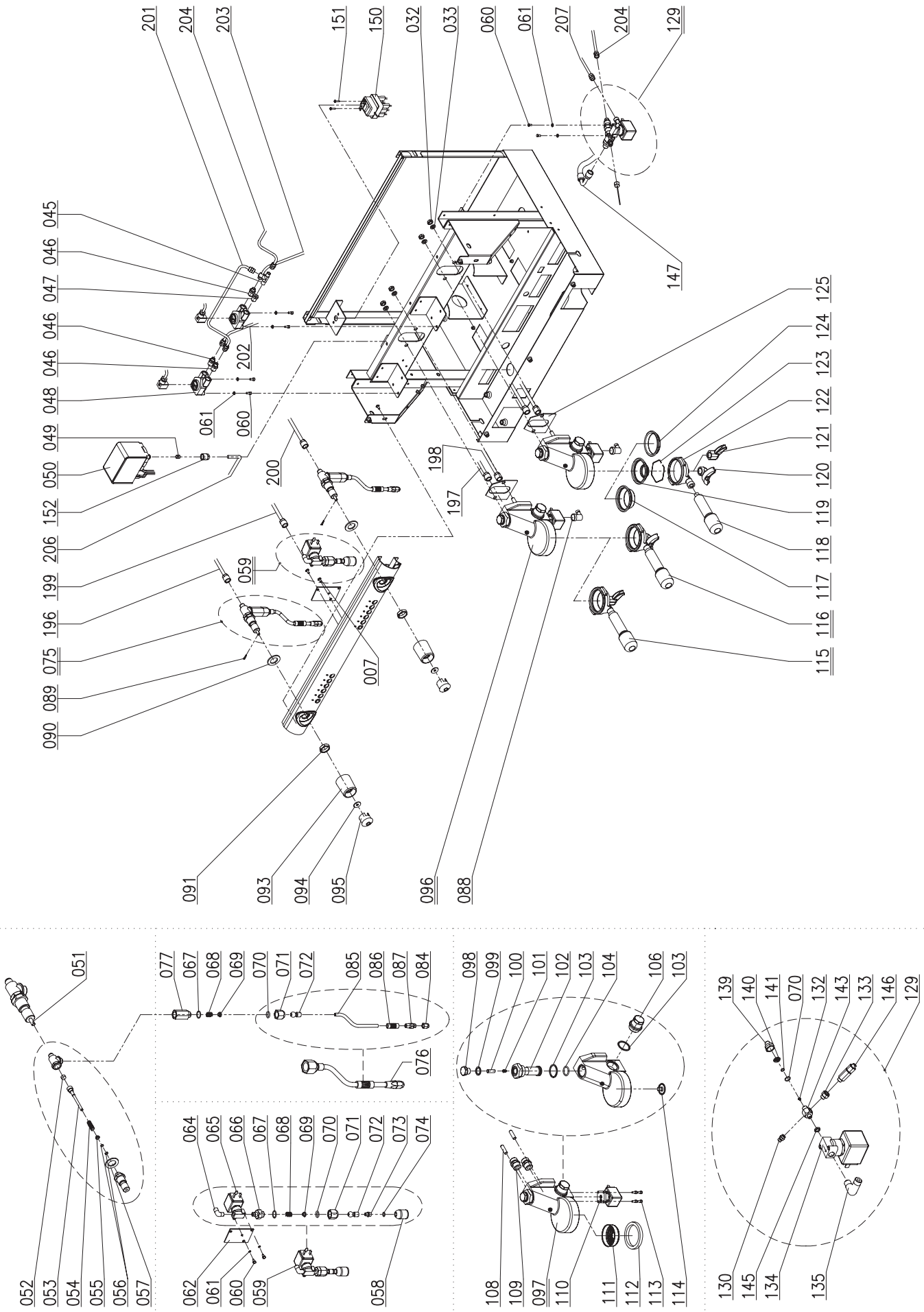


Figure 2 – Mod. Milano - Update 11/06

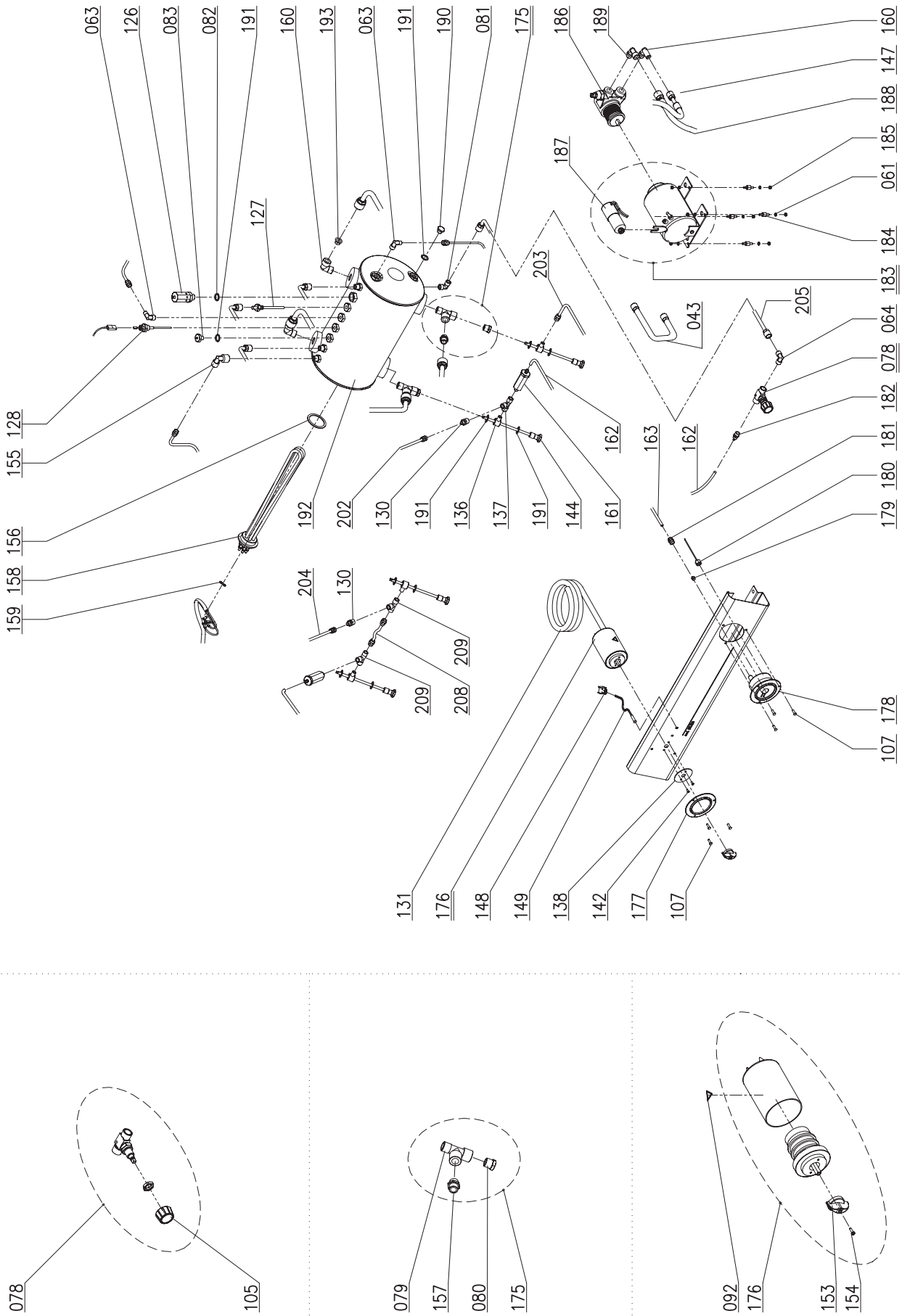


Figure 3 – Mod. Milano - Update 11/06

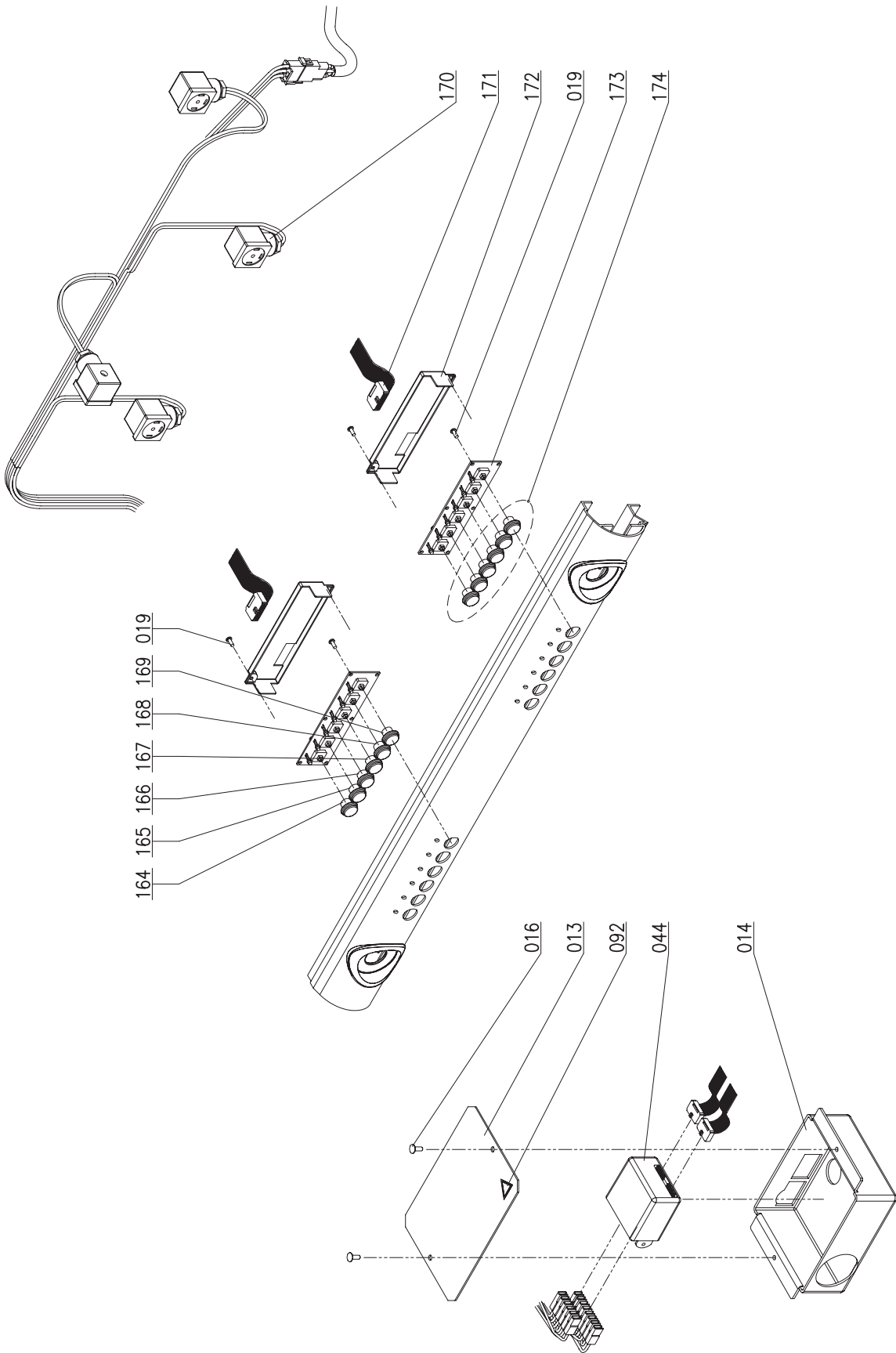


Figure 4 – Mod. Milano - Update 11/06

LEGEND EXPLODED DIAGRAM MILANO - UPDATE 11/05

POS.	CODE	DESCRIPTION
1A	10015307	TOP GRID MI 1GR
1B	10029601	TOP GRID MI 2-3GR
2	10955013	HOT SURFACE LABEL
3A	10015302	TOP TANK MI 1GR
3B	10022336	TOP TANK MI 3GR
3C	10029605	TOP TANK MI 2GR
4	10102249	LOCK NUT PG.21
5	10805083	SCREW TE M4X12 ZN
6	10805562	WASHER D4x16x1.5 FLAT ZN
7	10805061	SCREW TBL+- M6X12 NI
8A	10029709A	SIDE PANEL, LH MI RED
8B	10029735B	SIDE PANEL, LH MI BLACK
8C	10032715A	SIDE PANEL, LH MI BLUE
8D	10032799A	SIDE PANEL, LH MI SILVER
9	10019602	PANEL FIXING PLATE MI
10	10402058	CUP GRID WHITE
11	10652066	PANEL SPRING D5X12.5X16
12	10805182	SCREW TSP+ M4X20 ZN
13A	30011039	COVER MI 1GR ELECT. BOX
13B	30011041	COVER MI 2GR ELECT. BOX
13C	30011044	COVER MI 3GR ELECT. BOX
14A	30011040	ELECT. BOX MI 1GR
14B	30011052	ELECT. BOX MI 3GR
14C	30011053	ELECT. BOX MI 2GR
15A	10029567	CUP RETAINER MI 1GR
15B	10029592	CUP RETAINER MI 2GR
15C	10029597	CUP RETAINER MI 3GR
16	10805027	SCREW TBL- M4x10 A2
17A	10952051A	AL. RATING PLATE SAN REMO 230V
17B	10952052A	AL. RATING PLATE SAN REMO 400V
17C	10952053A	AL. RATING PLATE SAN REMO 120V
18	10805950	SHEAR RIVET D3x6
19	10805054	SCREW TC+ M3X10 A2
20A	10029618	TAP RING NUT RED MI
20B	10029625	TAP RING NUT BLACK MI
20C	10029634	TAP RING NUT BLUE MI
21A	10029660	DRAIN GRILLE MI 1GR
21B	10029666	DRAIN GRILLE MI 2GR
21C	10029677	DRAIN GRILLE MI 3GR
22A	10015306	DRIP TRAY MI 1GR
22B	10029648	DRIP TRAY MI 2GR
22C	10029649	DRIP TRAY MI 3GR
23A	10955018	LABEL SAN REMO 70X11.3
23B	10955020	LABEL SAN REMO 101X16.5
24A	10015803	BOTT. FRONT PANEL MI 1GR
24B	10022835	BOTT. FRONT PANEL MI 3GR
24C	10029808	BOTT. FRONT PANEL MI 2GR
25A	10022340	EXTRUSION MI 1GR SAP
25B	10022341	EXTRUSION MI 2GR SAP
25C	10022342	EXTRUSION MI 3GR SAP
25D	10022343	EXTRUSION MI 3GR SED
25E	10029653	EXTRUSION MI 1GR SED
25F	10029654	EXTRUSION MI 2GR SED
26A	10029610A	PROTECTIVE COVER MI RED
26B	10029627A	PROTECTIVE COVER MI BLUE
26C	10029628B	PROTECTIVE COVER MI BLACK
26D	10029658	PROTECTIVE COVER MI SILVER
27	10102250	GROMMET PG.21
28A	10015301B	FRONT PANEL MI 1GR
28B	10029646B	FRONT PANEL MI 2GR
28C	10029647B	FRONT PANEL MI 3GR
29	10803536	WASHER D6.2 TOOTH. ZN
30	10805254	SCREW TC+ 3.5X9.5 NI
31	10955025	TRIANGULAR EARTH LABEL
32	10802500	NUT M8 MEDIUM ZN
33	10803538	WASHER D8.2 TOOTH. ZN
34	10352050	FOOT 40X40
35	10022429	DRIP TRAY MI-VE 3GR
36	10852460	SPIRAL DRAIN HOSE L.2 MT
37	10806099	STAINLESS STEEL HOSE CLIP
38A	10029706A	SIDE PANEL, RH MI RED
38B	10029732B	SIDE PANEL, RH MI BLACK
38C	10032714A	SIDE PANEL, RH MI BLUE
38D	10032798A	SIDE PANEL, RH MI SILVER
39A	10019623A	FRAME MI 1GR BLACK
39B	10019624A	FRAME MI 2GR BLACK
39C	10019625B	FRAME MI 3GR BLACK
40	10805084	SCREW TC+ M4X10 ZN
41A	10015300A	BACK PANEL MI 1GR INOX
41B	10022334A	BACK PANEL MI 3GR INOX
41C	10029603A	BACK PANEL MI 2GR INOX
42A	10352032	CUP RETAINER MI 2GR
42B	10352033	CUP RETAINER MI 3GR
42C	10352036	CUP RETAINER MI 1GR
43	10852010	TRACTION TUBE L=500
44A	10112058	ON-OFF CONTROL UNIT 2GR 230V
44B	10112074A	CONTROL UNIT ET-30CT SED 120V CC
44C	10112086A	CONTROL UNIT ET-405CT SED 230V CC
44D	10112091A	CONTROL UNIT ET-30CT SED 230V CC
44E	10112102	ON-OFF CONTROL UNIT ET-405CT SAP 230V
45	10852028A	T-UNION 1010 6-6-1/8" M
46	10852580A	STRAIGHT UNION 1050 6-1/4" M
47	10852520	REDUCER UNION 2530 1/4M-1/8F
48	10112130	VOLUME MEASURER
49	10853054	DOUBLE CONE COUPLING NIPPLED.6mm PRESS. SWITCH
50	10602010	PRESSURE SWITCH
51	10402120A	TAP BODY
52	10505558	TAP SHAFT GASKET
53	10402061	CENTRAL TAP SHAFT
54	10402014	TAP SHAFT SPRING
55	10402015	TAP SHAFT BUSH
56	10505121	TAP SHAFT OR NBR
57	10505561	TAP BUSH COPPER
58	10402140	BOILER OUTLET
59A	10402065	COMPLETE WATER TAP MI 230V
59B	10402066	COMPLETE WATER TAP MI 120V
60	10805074	SCREW TE M4X8 ZN
61	10803519	WASHER D4.2 TOOTH. ZN
62	10019621A	ELECT. WATER PLATE MI
63	10852250A	ELBOW UNION 1020 6-1/4" M
64	10852066A	ELBOW UNION 1020 8-1/8" M
65A	10303086	2-WAY SOL. VALVE 1/8" 230V RUBINO
65B	10303090	2-WAY SOL. VALVE 1/8" 120V RUBINO
66	10859029	REDUCER UNION 1/8" M 3/8" M WATER MI
67	10402056	OR 2062 VITON
68	10402043	TAP JOINT SPRING
69	10402054	TAP JOINT CAP
70	10402063	OR 115 EPDM
71	10402022B	TAP JOINT NUT
72	10858589	JOINT FOR STEAM NOZZLE
73	10852069B	WATER JOINT DIFFUSER UNION MI
74	10502041	OR 2025 EPDM
75	10402250	COMPLETE STEAM TAP MI
76	10402280	COMPLETE STEAM LANCE MI
77	10852925	STEAM NOZZLE EXTENSION BRASS
78	10402059	DRAIN TAP WITH KNOB

ENGLISH

79	10855030	UNION 2070 T M/F/F 3/8"
80	10852092	REDUCER UNION 2530 3/8"M-1/4"F
81	10852060A	ELBOW UNION 1020 8-1/4"M
82	10806324	WASHER 3/8" COPPER
83	10652040	BOILER AIR VENT VALVE
84A	10402196	BOTTOM TUBE 4 HOLES
84B	10402198	BOTTOM TUBE 2 HOLES
85	10422125	STEAM LANCE MI
86	10753050	BURN PREV. RUBBER D.8
87	10402195	TOP
88	10255028A	ELBOW UNION GIR.F1/8
89	10806370A	TAP SPLIT PIN
90	10803547	WASHER D20 ZN
91	10402028	HALF NUT 1/2" CHR. RAISED
92	10955015	TRIANGULAR VOLTAGE LABEL
93	10402074	TAP KNOB
94	10402040	TAP WASHER BRASS
95	10351104	STEAM TAP KNOB CAP
96A	10052124	ASS. GR. E61 120V TUBES 10
96B	10052125	ASS. GR. E61 230V TUBES 10
97	10052130	RUN-OFF ASSEMBLY SR E61
98	10052137A	CLOSURE CAP GIGLEUR GR. E61
99	10502105A	TOP MUSHROOM GASKET GR. E61
100	10052136	FILTER GR. E61/RING
101	10052135	HOLE GROUPS GIGLEUR D.0.8
102	10052133A	TOP MUSHROOM GR. E61
103	10502090A	SIDE MUSHROOM GASKET GR. E61
104	10502100	MUSHROOM GASKET INT. GR. E61
105	10402060	DRAIN TAP KNOB
106	10052132A	SIDE MUSHROOM GR. E61
107	10805069	SCREW TBEI M3X10 A2
108	10052134	SCREW STUDS GR. E61
109	10852813	STRAIGHT UNION 3/8"M 1/2"M BRASS
110A	10302066	3-WAY SOL. VALVE BAS.32X32 230V
110B	10305555	3-WAY SOL. VALVE BAS.32X32 120V
111	10052120	MESH BOILER OUTLET GR. E61
112	10502110	BOILER UNIT GASKET GR. E61
113	10805071	SCREW TCEI M4X10 A2
114	10052141	DIFFUSER GR. E61
115	10402121A	ASS. FILTER HOLDER 1 CUP
116	10402122A	ASS. FILTER HOLDER 2 CUPS
117	10052110	FILTER 2 CUPS
118	10052040	FILTER HOLDER HANDLE
119	10052100	FILTER 1 CUP
120A	10052088	SPOUT SMALL 2-WAY OPEN
120B	10052090	SPOUT 2-WAY
121A	10052078	SPOUT SMALL 1-WAY OPEN
121B	10052080	SPOUT 1-WAY CURVED OPEN
122	10052030	FILTER HOLDER BODY
123	10052050	FILTER RETAINER SPRING
124	10052220	BLIND FILTER
125	10502120	GASKET RETAINER GR. E61
126	10652010	SAFETY VALVE
127	10853053	STRAIGHT INTAKE TUBE 1/4"M
128	10112064	LEVEL SENSOR 120mm
129A	10056061	ASS. FILL COMPONENTS MI 230V
129B	10056062	ASS. FILL COMPONENTS MI 120V
130	10852080A	STRAIGHT UNION 1050 6-1/8"M
131A	10102190	POWER CABLE 3X2.5 MT3 N5 SINGLE PHASE
131B	10102191	POWER CABLE 5X2.5 MT3 N4 THREE PHASE
131C	10102193	POWER CABLE 3X4 MT3 N7
131D	10102196	CABLE 3x12AWG SJOOW 3M
131E	10102197	CABLE 3x14AWG SJOOW
132	10052144	GIGLEUR HOLE COMPONENTS D.1.5

133	10852901	STRAIGHT REDUCER UNION 2520 1/8"-1/4"
134A	10303088	SOL. VALVE 2-WAY 1/8" 230V 0-10B
134B	10303090	SOL. VALVE 2-WAY 1/8" 120V 0-10B
135	10852030A	ELBOW UNION 1020 6-1/8"M
136	10852240A	STRAIGHT UNION 1170 6-1/4"M
137	10859030	UNION 2003 T F/F/F 1/8"
138	50302018	SWITCH LABEL SER.012
139	10852672	REDUCER UNION NI CH22X23 3/8F-1/4M
140	10052139	MESH FILTER ASS. FILL COMP.
141	10502028	OR 3037 VITON
142	10809019	SCREW TBEI M3X8 BRUNITE
143	10852682	UNION NI CH.22X38 1/8"MFM
144	10042017	UNIVERSAL INJECTOR
145	10853085	HEXAGONAL NUT 1/8"
146	10652020	NON-RETURN VALVE
147	10852470	TRACTION TUBE L.450
148	10105180	BLOCK 2-WAY M.
149A	10553021	ORANGE INDICATOR LIGHT D6 230V WIRED
149B	10553024	ORANGE INDICATOR LIGHT D6 120V WIRED
150	10111015	THERMOSTAT, MANUAL RESET
151	10805872	SCREW TC+ M4X6 ZN
152	10802511	NUT 1/4" PRESSURE SWITCH
153	10122012	SWITCH KNOB
154	10122011	SWITCH KNOB SCREW
155	10852065A	ELBOW UNION 1093 6-1/4"F
156	10502020	RESISTOR WASHER
157	10852290A	STRAIGHT UNION 1050 10-3/8"M
158A	10455051	RESISTOR 1950W 120V 1GR
158B	10455053	RESISTOR 2700W 120V 2GR
158C	10455050	RESISTOR 1950W 230V 1GR
158D	10455052	RESISTOR 2700W 230V 2GR
158E	10455054	RESISTOR 5100W 230V 3GR
158F	10455055	RESISTOR 5100W 120V 3GR
158G	10455080	RESISTOR 4500W 230V 2GR
159	10106060	RESISTOR CONNECTION BRASS
160	10852530A	ELBOW UNION 1020 10-3/8"M
161	10655555	EXPANSION VALVE
162	10905010	TUBE, TRANSPARENT SILICONE
163	10002012	TUBE, COPPER D. 4X0.5
164A	10029616	COFFEE BUTTON RED/LH SHORT MI
164B	10029626	COFFEE BUTTON BLACK/LH SHORT MI
164C	10029635	COFFEE BUTTON BLUE/LH SHORT MI
165A	10029619	COFFEE BUTTON RED/LH LONG MI
165B	10029630	COFFEE BUTTON BLACK/LH LONG MI
165C	10029636	COFFEE BUTTON BLUE/LH LONG MI
166A	10029620	COFFEE BUTTON RED/RH SHORT MI
166B	10029631	COFFEE BUTTON BLACK/RH SHORT MI
166C	10029637	COFFEE BUTTON BLUE/RH SHORT MI
167A	10029621	COFFEE BUTTON RED/RH LONG MI
167B	10029632	COFFEE BUTTON BLACK/RH LONG MI
167C	10029639	COFFEE BUTTON BLUE/RH LONG MI
168A	10029622	BUTTON RED MANUAL RUN-OFF MI
168B	10029638	BUTTON BLUE MANUAL RUN-OFF MI
168C	10029641	BUTTON BLACK MANUAL RUN-OFF MI
169A	10029623	BUTTON RED H/WATER RUN-OFF MI
169B	10029633	BUTTON BLACK H/WATER RUN-OFF MI
169C	10029640	BUTTON BLUE H/WATER RUN-OFF MI
170A	10102235A	WIRING MI 2/SAP-SED
170B	10102236A	WIRING MI 3/SAP-SED
170C	10102244A	WIRING MI 1/SAP-SED
171A	10112067	CABLE PIN TO PIN, 1100mm
171B	10112069	CABLE PIN TO PIN, 450mm
171D	10112078	CABLE, PIN TO PIN, 600mm
171E	10112079	CABLE, PIN TO PIN, 800mm

ENGLISH

171F	10112096	CABLE, PIN TO PIN, 1400mm
172	30011087	KEYPAD COVER MI
173A	10112087A	KEYPAD SED MI GREEN LEDS
173B	10112099A	KEYPAD SAP MI GREEN LEDS
174A	10029645	PRINTED RED BUTTONS KIT MI SED
174B	10029656	PRINTED BLACK BUTTONS KIT MI SED
174C	10029657	PRINTED BLUE BUTTONS KIT MI SED
174D	10029661	PRINTED BLUE BUTTONS KIT MI SAP
174E	10029662	PRINTED BLACK BUTTONS KIT MI SAP
174F	10029663	PRINTED RED BUTTONS KIT MI SAP
175	10402124	ASS. HEAT EX. UNIONS 3/8"
176A	10122016	SWITCH, SINGLE PHASE
176B	10122018	SWITCH, THREE-PHASE
177	10022187	SWITCH FLANGE
178	10552013A	DOUBLE SCALE PRESSURE GAUGE
179	10855556	1310 OGIVA D4
180	10002021	CAPILLARY TUBE
181	10855557	NUT 1303 4-1/8"F
182	10853058	STRAIGHT UNION 1510 6-1/8M
183A	10252079A	EL. MOTOR 150W 120V 1-2GR
183B	10252080A	EL. MOTOR 150W 230V 1-2GR
183C	10252086	EL. MOTOR 150W 230V 2-3GR
184	10255022	VIBRATION DAMPER PUFFER
185	10805512	NUT 4MA MEDIUM ZN
186A	10252070	PUMP P1504 W/H.CLIP 1-2GR
186B	10252072	PUMP P204 W/H.CLIP 3GR
187A	10252038	MOTOR CONDENSER 150 W
187B	10252040	MOTOR CONDENSER 165 W
188	10852450	PULL TUBE L=2000
189	10852280A	ELBOW UNION 1020 8-3/8"M
190	10852540	CAP 2611 1/4"M
191	10852180	WASHER 1/4" COPPER
192A	10002635	BOILER COPPER 1GR D.180
192B	10002636	BOILER COPPER 2GR D.180
192C	10002637	BOILER COPPER 3GR D.180
193A	10052156	GIGLEUR HOLE D.2.5 TUBES 10
193B	10052157	GIGLEUR HOLE D.3 TUBES 10
193C	10052158	GIGLEUR HOLE D.3.5 TUBES 10
193D	10052159	GIGLEUR WITHOUT HOLES TUBES 10
193E	10052166	GIGLEUR HOLE D.4 TUBES 10
193F	10052167	GIGLEUR HOLE D.2 TUBES 10
193G	10052168	GIGLEUR HOLE D.5 TUBES 10
194	10805031	SCREW TE M6X16 ZN
195	10805105	SCREW TE M6X12 ZN
196	10002116	STEAM TUBE LH MI 2-3GR
197A	10002114	TOP HEAT EX. TUBE MI 2-3GR
197B	10002135	TOP HEAT EX. TUBE MI 1GR
198A	10002134	BOTTOM HEAT EX. TUBE MI 1GR
198B	10002161	BOTTOM HEAT EX. TUBE MI 2-3GR
199A	10002132	HOT WATER RUN-OFF TUBE MI 1GR
199B	10002221	HOT WATER RUN-OFF TUBE MI 3GR
199C	10002222	HOT WATER RUN-OFF TUBE MI 2GR
200A	10002115	STEAM TUBE RH MI 2-3GR
200B	10002136	STEAM TUBE RH MI 1GR
201A	10002121	1st-2nd VOL. MEAS. CONNECTION TUBE MI 2-3GR SED
201B	10002220	2nd-3rd VOL. MEAS. CONNECTION TUBE MI 3GR SED
202A	10002141	SUPPLY TUBE GR. MI 1GR SED
202B	10002143	SUPPLY TUBE 1°GR. MI 2-3GR SED
203	10002122	SUPPLY TUBE 2-3°GR. MI 2-3GR SED
204A	10002120	VOL. MEAS. SUPPLY TUBE MI 2-3GR SED
204B	10002140	VOL. MEAS. SUPPLY TUBE MI 1GR SED
204C	10002144	SUPPLY TUBE GR. MI 1GR SAP
204D	10002151	SUPPLY TUBE GR. MI 2-3GR CA 2 SAP

205A	10002123	BOILER DRAIN HOSE MI 2GR
205B	10002142	BOILER DRAIN HOSE MI 1GR
205C	10002219	BOILER DRAIN HOSE MI 3GR
206A	10002117	PRESSURE SWITCH TUBE MI 2-3GR
206B	10002137	PRESSURE SWITCH TUBE MI 1GR
207A	10002118	BOILER FILL HOSE MI 2-3GR
207B	10002138	BOILER FILL HOSE MI 1GR
208A	10002062	CONNECTION TUBE 1°-2° GR MI 2GR SAP
208B	10002112	CONNECTION TUBE 1-2-3°GR. MI 3GR SAP
209	10853215	T-UNION 1/8" M/F/F